

SHOWLED ANIMATION

TECHNICAL DATA SHEET

September 2022

ShowLED Animation drapes combine individually controllable RGB LEDs with inherently flame-retardant Molton CS fabric and IFR DekoTaft lining. For easy panel joining in any direction, the black LED curtains are finished with hook & loop fastener on all four sides. The perforated fastener also allows for handy mounting of the drapes using cable ties (not included).

All RGB LEDs are randomly placed at ± 30 LEDs per m^2 and offer stunning animated video effects using the full colour spectrum.

Standard sizes: 4x9m and 5x7m (other sizes / shapes / fabrics on request).

» COMPONENT PARTS



1. LED String



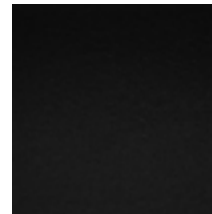
2. Easy Configuration



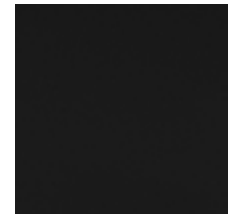
3. Controller



4. V-Box



5. Molton CS



6. DekoTaft

Name	Information
1. LED String	<ul style="list-style-type: none"> • High-quality RGB LEDs • Additive colour mixing • Intelligent LED sockets connected via thin cables • 64 LEDs on a cable run
2. Easy Configuration	<ul style="list-style-type: none"> • Custom designed software • No pixel mapping required • Hands on configuration of each curtain
3. Controller	<ul style="list-style-type: none"> • Max.1024 RGB LEDs per controller • 19"rack mountable • Ethernet connection • Dimensions: 482 x 135 x 85 mm • Weight: 3.54 kg
4. V-Box	<ul style="list-style-type: none"> • Media server/video software compatible • No additional video controllers or converters required • Plug & Play; just upload the configuration file and start projecting • Supports Composite, VGA and S-Video signal
5. Molton CS	<ul style="list-style-type: none"> • Width: 300 cm / Length: ± 60 m / Weight: 320 g/m^2 • Composition: 100% PES • FR standard: NF P 92-503 / M1, BS 5867 PART 2B (2008) / pass, DIN 4102 / B1, NFPA 701 (2019) / pass, GB 8624-2012 / B1, AS 1530.3-1999, AS 1530.2-1993 • Fastness to light: DIN EN ISO 105 • Note 5 for both sides • Colour fastness to chlorinated water: EN ISO 105 - E03:2010 • 0007 (black): note 4-5 • Fastness to rubbing (wet & dry): Dry raised: rating 3 • Wet raised: rating 4-5 Dry unraised: rating 3 • Wet unraised: rating 4-5
6. DekoTaft	<ul style="list-style-type: none"> • Width: 310 cm / Length: ± 100 m / Weight: 66 g/m^2 • Composition: 100% PES FR • FR standard: NFP-M1 • Tear strength: ISO13937-1 2000 • Warp: 11 N - Weft: 18 N • Tensile strength: ISO13934-1 2013 • Warp: 360 N - Weft: 500 N