

## LUREXVOILE 100

### TECHNICAL DATA SHEET

March 2022

Medium transparent voile with a high metallic shine. Can be crushed for extra depth and effects.

» **ARTICLE CODE**

6110 0300 #

» **WIDTH**

300 cm

» **LENGTH**

± 60 m

» **WEIGHT**

50 g/m<sup>2</sup>

» **COMPOSITION**

100% LUR

» **FLAME RESISTANCE**

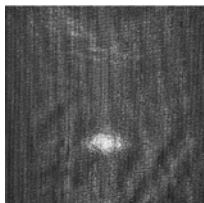
NFP 92-503

CLASS M1

BS 5867 PART 2 TYPE B

PASS

» **AVAILABLE COLOURS**



0007



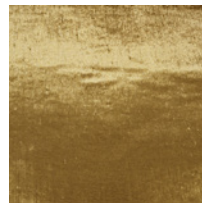
0200



0232



0300



0500



0510