

SOLINFIX

TECHNICAL DATA SHEET

June 2019

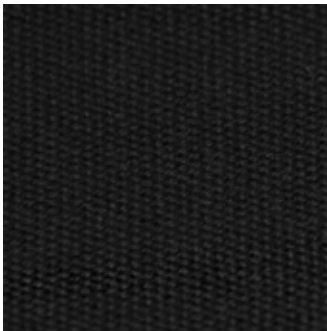
SolinFix is a heavy-duty stage floor with a non-slip latex backing for extra grip. As a result of its tight weave, this durable cotton canvas can easily be painted and is resistant to intensive use on stage.

» ARTICLE CODE	» WIDTH	» LENGTH	» WEIGHT
5712 0315 0007	315 cm	± 35 m	610 g/m ²

» **COMPOSITION**
75% CO + 25% PA

» **FLAME RESISTANCE**
DIN 4102 CLASS B1

» **AVAILABLE COLOURS**



0007

NOTE : Please mind the fabric can shrink up to 5% after cutting.
Lay flat on the ground, during at least 24h before cutting the fabric.