

# ACOUSTIC SHEER CS LIGHT

## TECHNICAL DATA SHEET

February 2024

Acoustic Sheer CS Light is weaved with a cutting-edge technology which makes this translucent fabric acoustically absorbing. Use this flame-retardant sheer to cover windows or as a semi see-through divider in an open office.

» **ARTICLE CODE**

2551 0304 #

» **WIDTH**

304 cm

## » LENGTH

$\pm 30$  m

» **WEIGHT**

100 g/m<sup>2</sup>

## » COMPOSITION

66% TCS + 34% PES FR

## » CARE SYMBOLS



» **FLAME RESISTANCE**

EN 13773 / class 1

NFPA 701 / pass

## » LIGHT FASTNESS

L=6 / M=6 / D=6-7

## » RUBBING FASTNESS

EN 14465

dry=4-5 / wet=4-5

## » WASHING SHRINKAGE

**30°C EN 26 330 8 A**

Warp= -0,7 %

Weft= -0,5 %

## » FASTNESS TO WATER

## SPOTTING

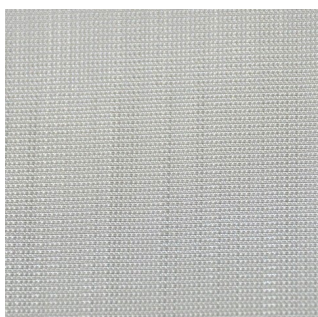
DIN EN ISO 105 E 07

Change of colour: 5

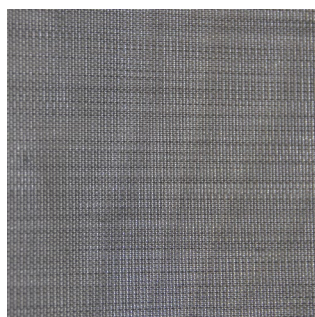
Spotting: 5

» **AVAILABLE COLOURS**

0003



0005



0030

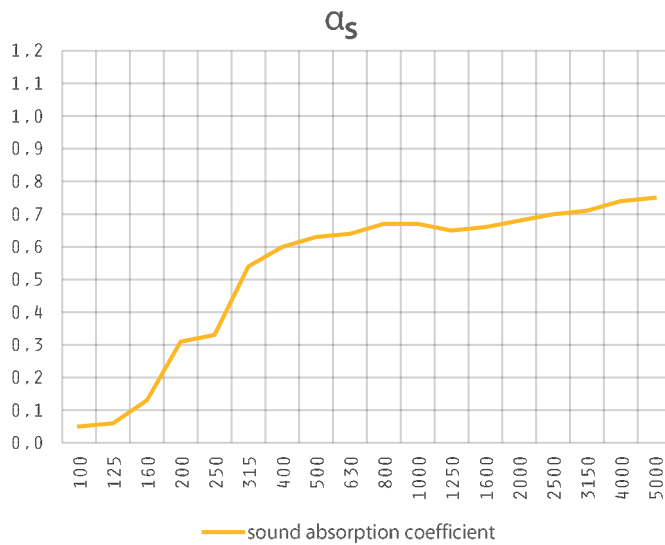
## ACOUSTIC SHEER CS LIGHT

### TECHNICAL DATA SHEET

February 2024

#### SOUND ABSORPTION

full box pleated curtain • 15 cm from the wall



f(Hz)	$\alpha_s$
100	0,05
125	0,06
160	0,13
200	0,31
250	0,33
315	0,54
400	0,60
500	0,63
630	0,64
800	0,67
1000	0,67
1250	0,65
1600	0,66
2000	0,68
2500	0,70
3150	0,71
4000	0,74
5000	0,75
ISO 11654	
$\alpha_w = 0,65$	