

WOOL SERGE PANNE

TECHNICAL DATA SHEET

April 2021

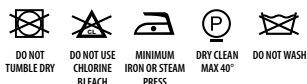
Double-sided raised fabric with good acoustic qualities, made from recycled material. This flame retardant wool is excellent value for money.

» ARTICLE CODE	» WIDTH	» LENGTH	» WEIGHT
1354 0150 0007 (only black)	150 cm	± 43 m	400 g/m ²
1350 0150 #	150 cm	± 43 m	540 g/m ²
1355 0150 0007 (only black)	150 cm	± 43 m	650 g/m ²
1353 0150 0007 (only black)	150 cm	± 30 m	1000 g/m ²

» COMPOSITION

90% WO + 10% MNF

» CARE INSTRUCTIONS



» FLAME RESISTANCE

BS 5867 part 2B (2008)	PASS
AS 1530.2	PASS
AS 1530.3	PASS



» TEAR STRENGTH

ISO 13937-3: 2000
Warp: 22N - Weft: 37N

» TENSILE STRENGTH

ISO 13934-1: 1999
Warp: 400N - Weft: 190N

» COLOUR FASTNESS TO LIGHT

ISO 105-B02-1999+Am 2002
note 5

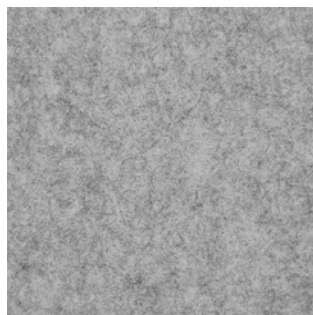
» AVAILABLE COLOURS



0001



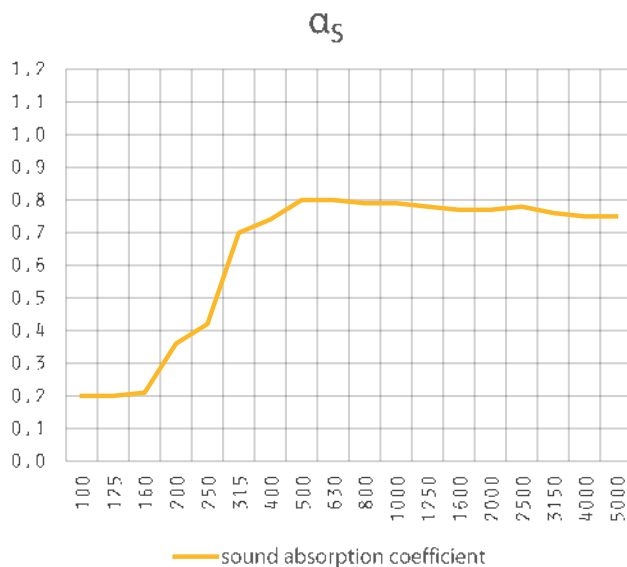
0007



0029

SOUND ABSORPTION WOOL SERGE PANNE 540 G

full box pleated curtain • 15 cm from the wall

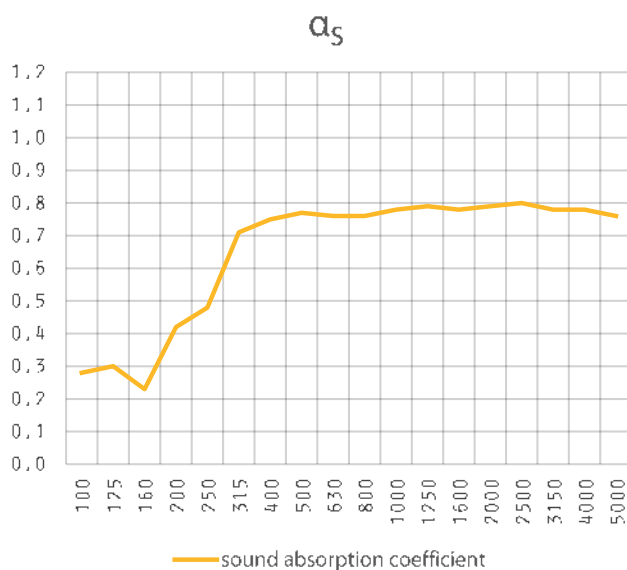


f(Hz)	α_s
100	0,20
125	0,20
160	0,21
200	0,36
250	0,42
315	0,70
400	0,74
500	0,80
630	0,80
800	0,79
1000	0,79
1250	0,78
1600	0,77
2000	0,77
2500	0,78
3150	0,76
4000	0,75
5000	0,75

ISO 11654
 $\alpha_w = 0,75$

SOUND ABSORPTION WOOL SERGE PANNE 1000 G

full box pleated curtain • 15 cm from the wall



f(Hz)	α_s
100	0,28
125	0,30
160	0,23
200	0,42
250	0,48
315	0,71
400	0,75
500	0,77
630	0,76
800	0,76
1000	0,78
1250	0,79
1600	0,78
2000	0,79
2500	0,80
3150	0,78
4000	0,78
5000	0,76

ISO 11654
 $\alpha_w = 0,80$